

ONLINE ONLY

Supplemental material

MRI-guided stereotactic laser corpus callosotomy for epilepsy: distinct methods and outcomes

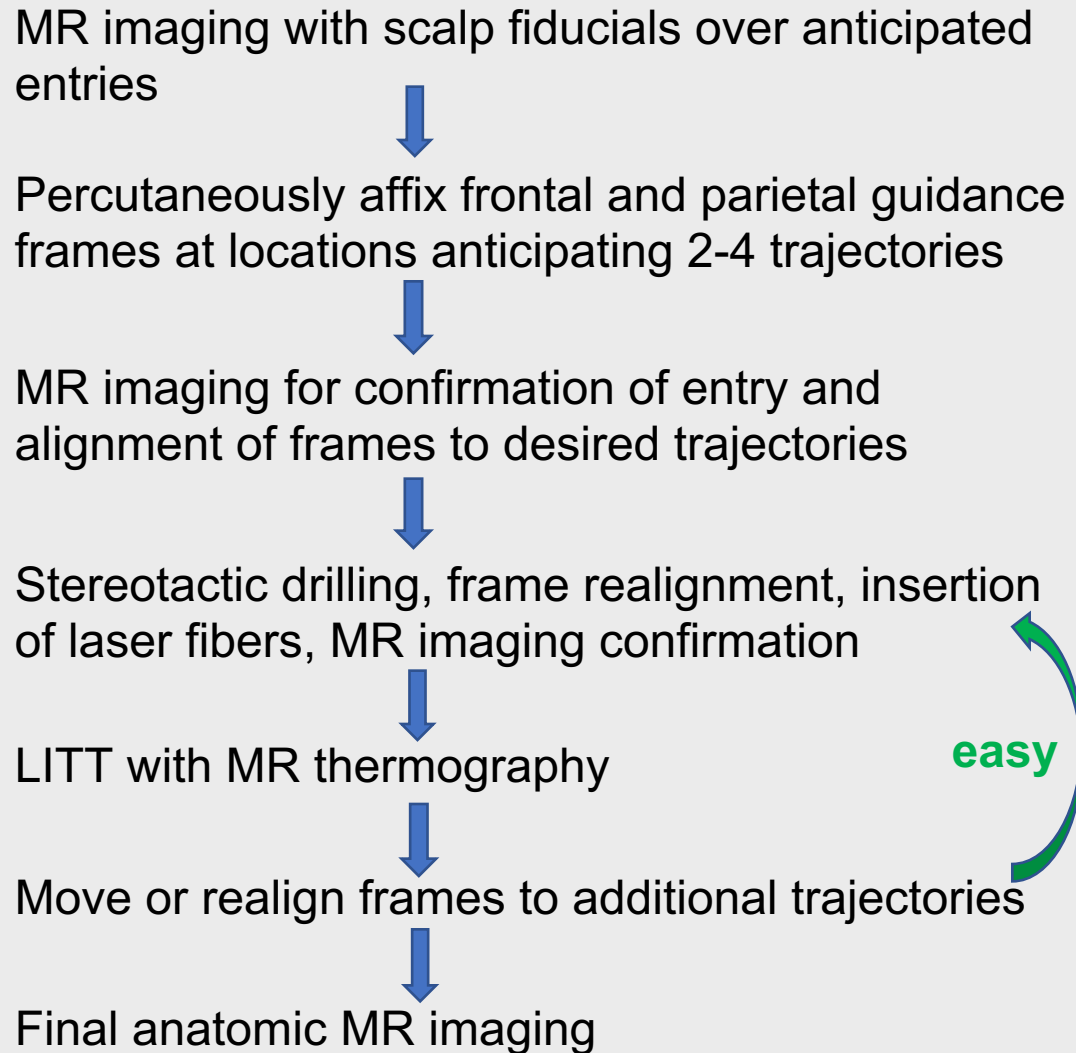
Rich et al.

<https://thejns.org/doi/abs/10.3171/2020.7.JNS20498>

DISCLAIMER The *Journal of Neurosurgery* acknowledges that the following section is published verbatim as submitted by the authors and did not go through either the *Journal's* peer-review or editing process.

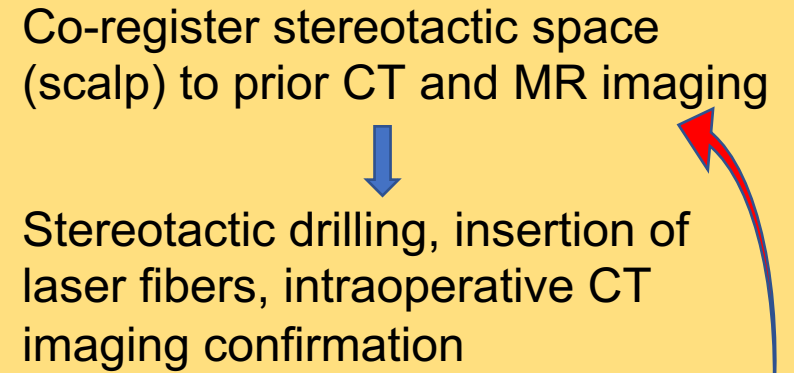
Single-site workflow: Direct MRI guidance platform (Clearpoint)

Interventional MRI suite:



Multi-site workflow: Stereotactic surgical robot (ROSA)

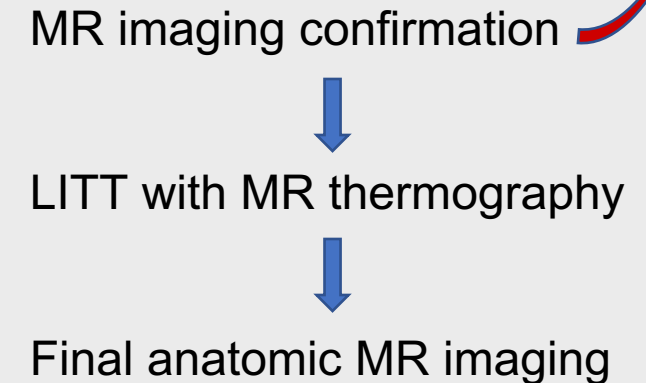
OR suite:



Patient transfer and reposition

difficult

Diagnostic MRI suite:



Supplemental Figure. Comparison of alternative workflows for SLCC. Right: Direct MRI-guided technique utilizing Clearpoint platform and software. Left: Robot-assisted technique utilizing ROSA. Note the requirement to transport the patient between sites (OR to MRI) for the robot-assisted technique.