

ONLINE ONLY

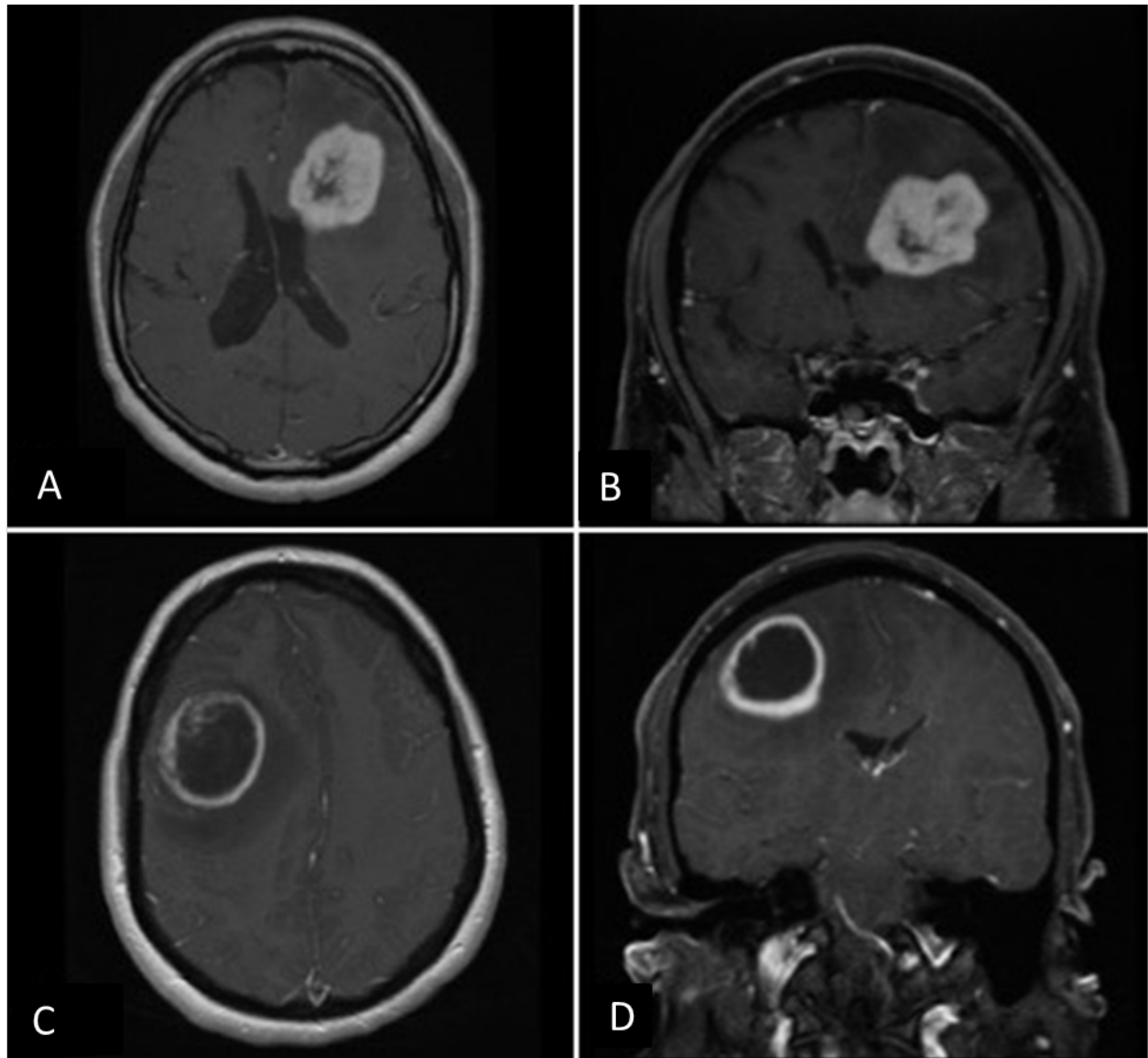
Supplemental material

Influence of supramarginal resection on survival outcomes after gross-total resection of IDH-wild-type glioblastoma

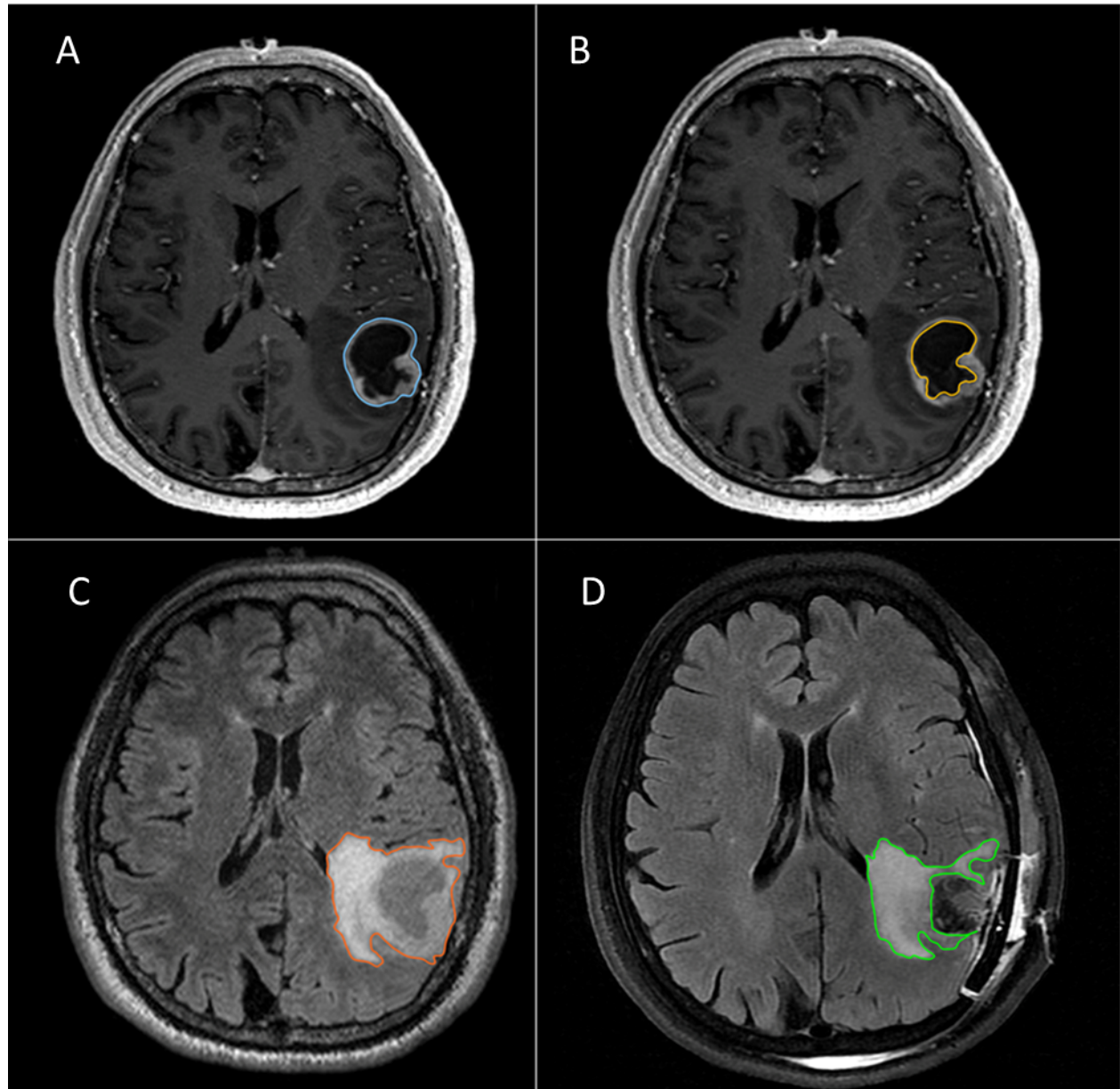
Vivas-Buitrago et al.

<https://thejns.org/doi/abs/10.3171/2020.10.JNS203366>

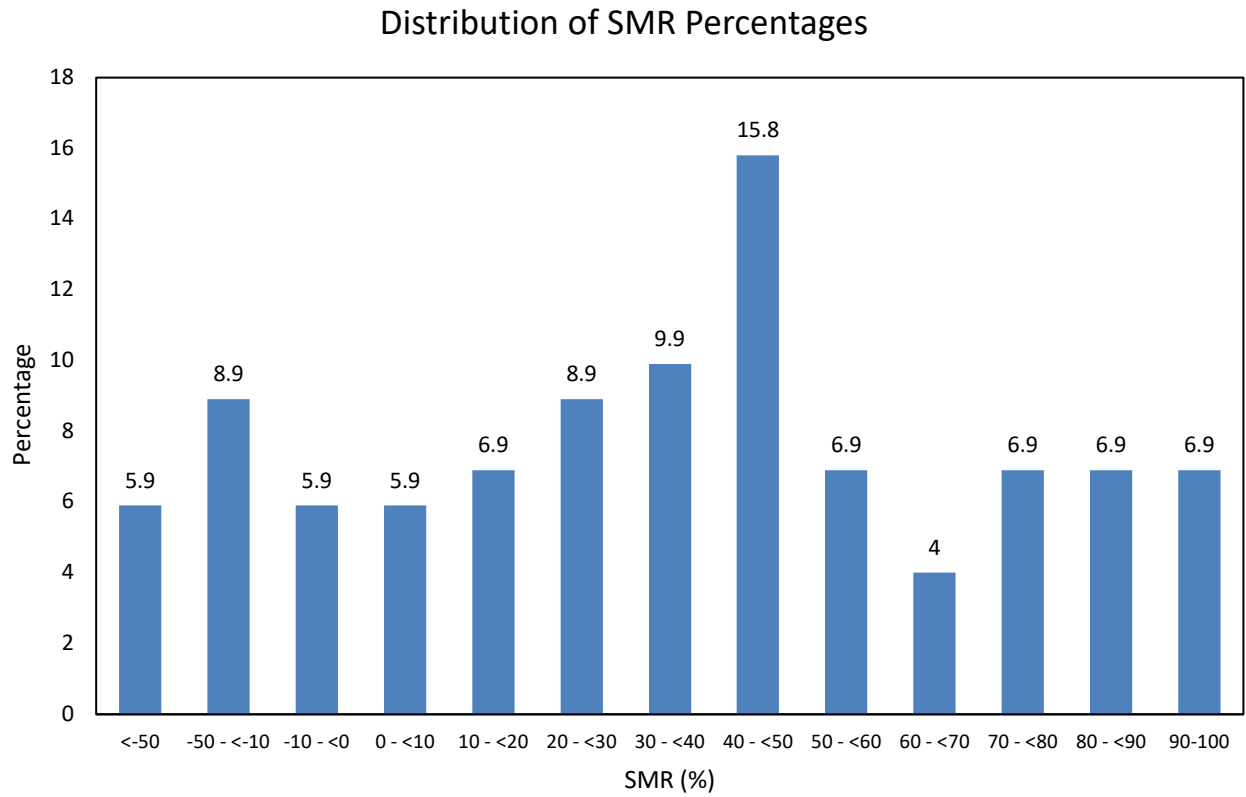
DISCLAIMER The *Journal of Neurosurgery* acknowledges that the following section is published verbatim as submitted by the authors and did not go through either the *Journal's* peer-review or editing process.



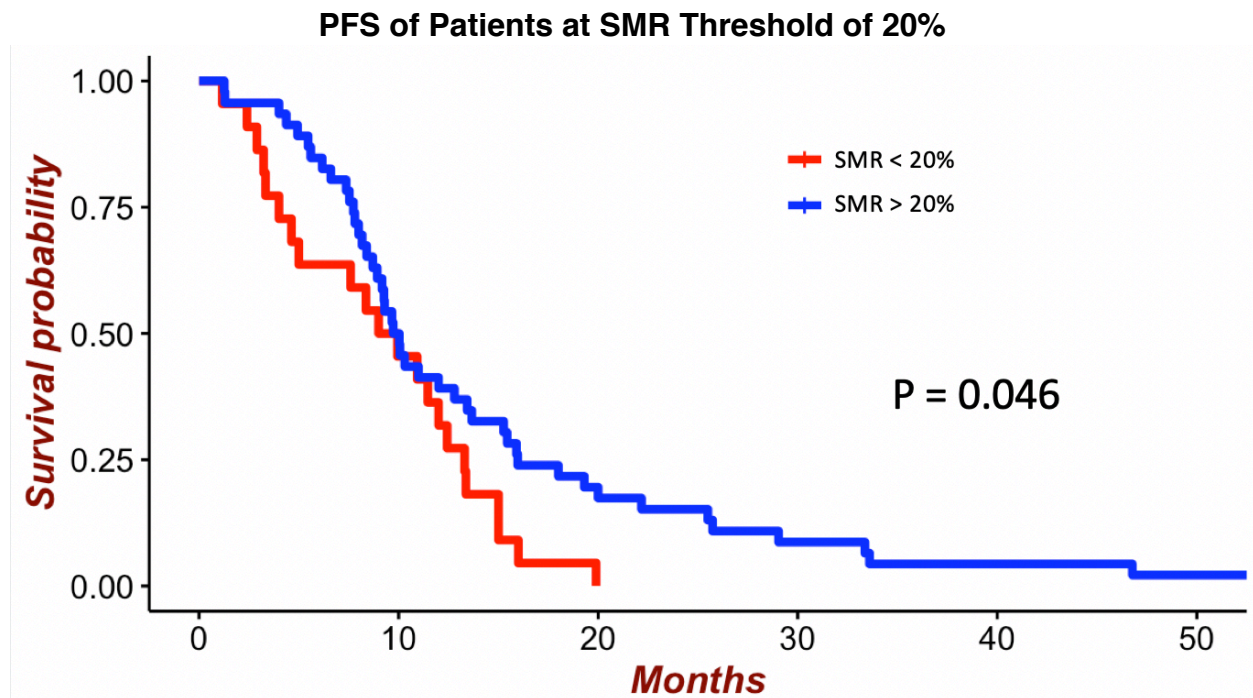
Supplementary Figure 1: Location of the tumor in relation to the lateral ventricles (LV). **A & B**, T1-weighted post-contrast MR images, axial and coronal view respectively, showing CE tumor bordering the LV. **C & D**, T1-weighted post-contrast MR images, axial and coronal view respectively.



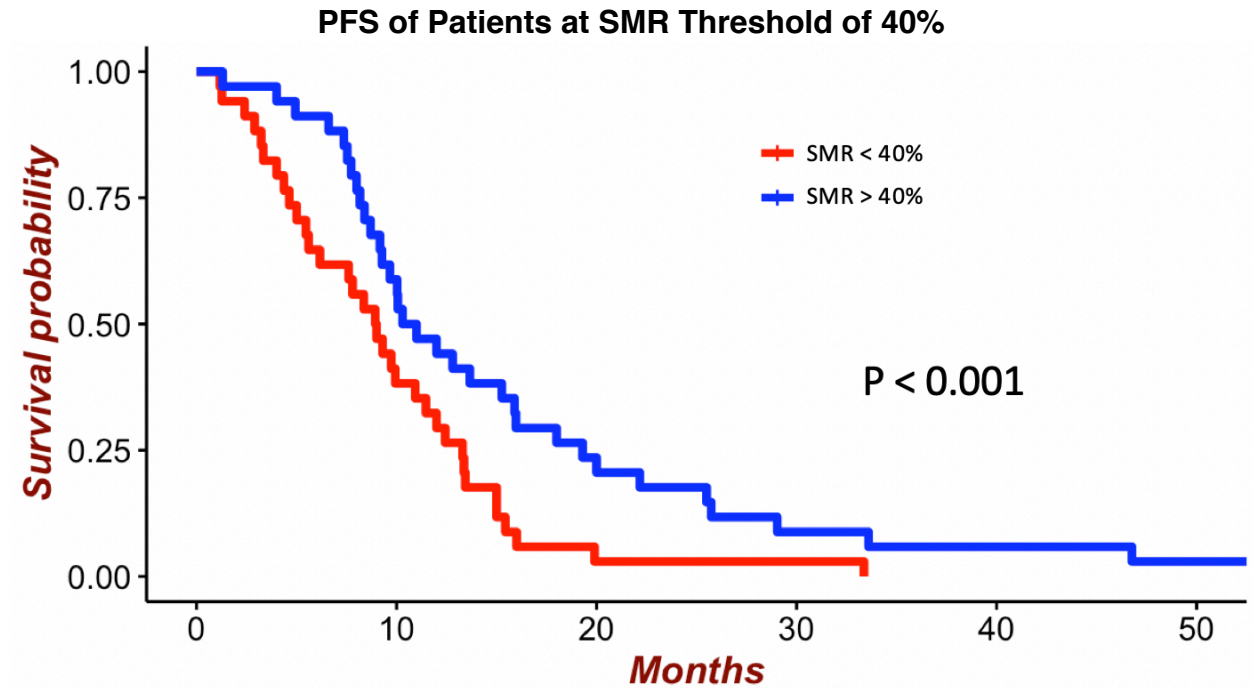
Supplementary Figure 2: Illustration of the Region of interest (ROI) for each volumetric measurement. **A.** Contrast-enhancing ROI (blue) on pre-operative MRI axial T1 post-contrast sequence. **B.** Cystic/Necrosis ROI (yellow) on pre-operative MRI axial T1 post-contrast sequence. **C.** FLAIR ROI (orange) on pre-operative MRI axial FLAIR sequence. **D.** FLAIR ROI (green) on post-operative MRI axial FLAIR sequence.



Supplementary Figure 3: Histogram showing distribution of SMR percentages in our cohort.



Supplementary Figure 4: PFS by SMR threshold of 20% among patients with GBM with GTR of the CE. The mean PFS for patients receiving <20% SMR was 8.7 months compared to 9.6 months for >20% SMR patients (**P = 0.046**).



Supplementary Figure 5: PFS by SMR threshold of 40% among patients with GBM with GTR of the CE. The mean PFS for patients receiving <40% SMR was 8.9 months compared to 10.6 months for >40% SMR patients (**P < 0.001**).

Variable	Yes	No	P-Value
Deep Seated	24.8%	31.9%	0.50
Non-Eloquent	30.0%	26.4%	0.73

Supplementary Table 2: Univariate Analysis of SMR and PFS		
Variable	HR (95% CI)	P-Value
T2-FLAIR SMR (%)		
1% Increments	1.00 (0.99 – 1.01)	0.38
10% Increments	0.92 (0.85 – 0.99)	0.04
> 20%	0.58 (0.34 – 0.99)	0.05
> 30%	0.50 (0.30 – 0.85)	0.01
> 40%	0.52 (0.31 – 0.86)	0.01
> 50%	0.64 (0.38 – 1.06)	0.08
Age		
≥ 65	2.34 (1.31 – 4.19)	<0.01
Gender		
Male	0.87 (0.52 – 1.45)	0.59
MGMT		
Methylated	0.61 (0.48 - 0.94)	0.04
KPS		
>70	0.48 (0.24 – 0.86)	0.03
Charlson Comorbidity Index	1.20 (1.01 – 1.43)	0.03